

BIN IT TO WIN IT!

This how-to instruction guide is designed to assist you in building recycling bins for your school in just a few fun and simple steps!

Inside, you will find four easily customizable bin designs, with visual step-by-step instructions for how to turn readily-available, inexpensive materials into fully functional recycling bins.

We encourage you to introduce this toolkit to your students as a way to increase classroom recycling and ultimately become one step closer to reaching your school's recycling goals!

ENJOY!



**RECYCLE
RALLY**

HOW TO: DESIGN A BIN MADE WITH ALUMINUM CANS



RECYCLE
RALLY

HOW TO: DESIGN A BIN MADE WITH ALUMINUM CANS

SUPPLIES



aluminum cans



tape and/or glue



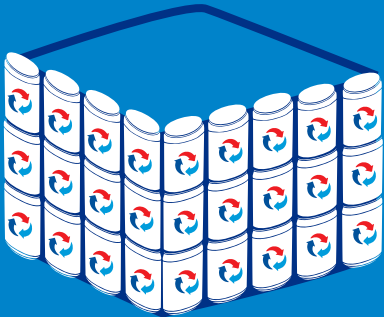
a cardboard box



a plastic bag

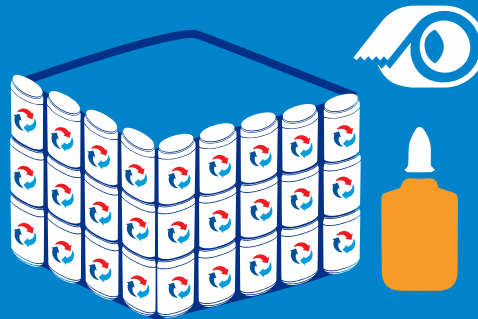
STEP #1

Stack cans so they are covering all four sides of the cardboard box.



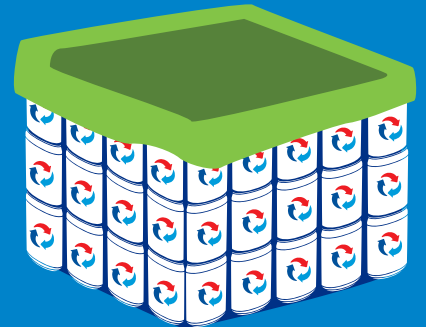
STEP #2

Using tape or glue, adhere cans to each other, as well as to the box.



STEP #3

Place plastic bag in cardboard box, and start recycling!



TIPS & SUGGESTIONS

- 1 Expand it – the bigger the bin, the more it will act as a visual cue for recycling.
- 2 Incorporate plastic bottles too, not just cans!
- 3 Turn your bin into a mural by painting or arranging cans in a pattern.

HOW TO: CREATE A BIN FROM A CARDBOARD BOX



RECYCLE
RALLY

HOW TO: CREATE A BIN FROM A CARDBOARD BOX

SUPPLIES



2 cardboard boxes



scissors



colored paper



paint and markers



popsicle sticks

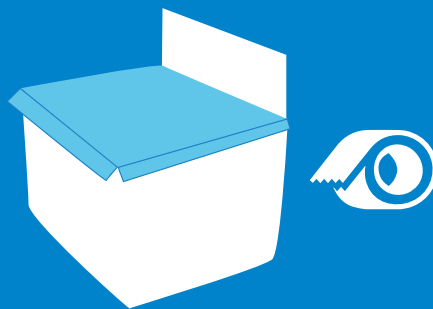
STEP #1

Cut three of the four flaps off the top of a cardboard box. Glue two popsicle sticks on the backside of the fourth flap, in-between the seam of the flap and the box itself.



STEP #2

Create a lid by cutting a larger box the same size as the opening plus 2 inches on each side. Fold and tape the overhanging material to create edges to lock the lid in place.



STEP #3

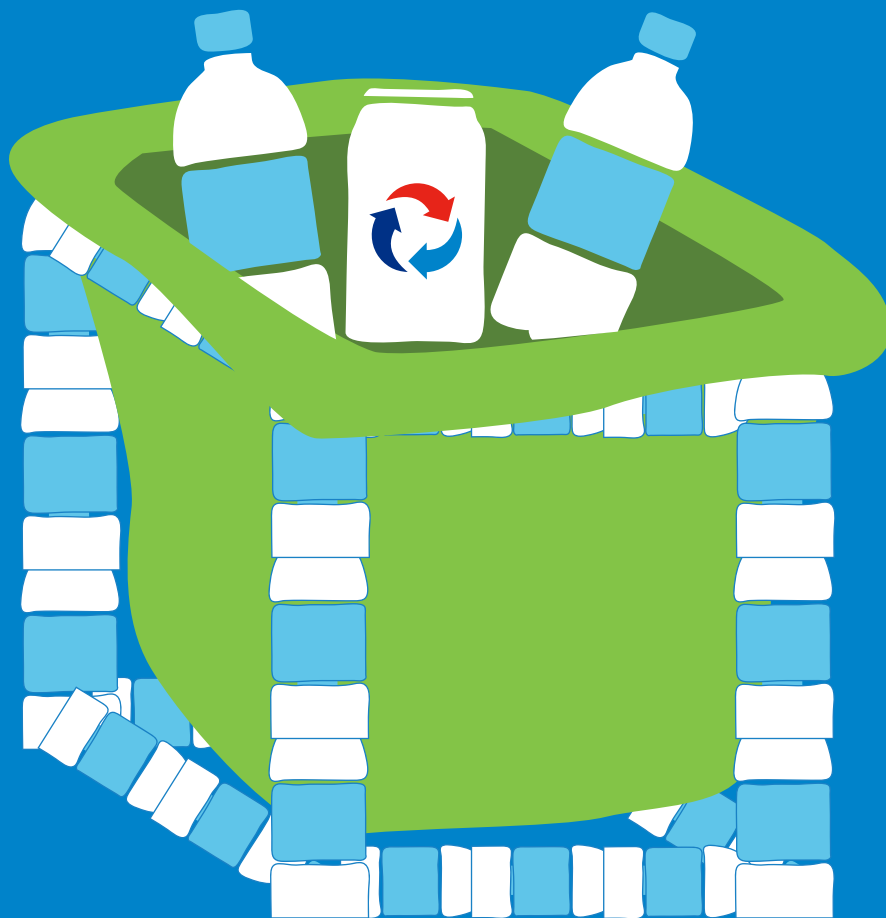
Decorate your bin using markers, construction paper, or paint. Cut a hole in the lid to cue users what type of material it accepts.



TIPS & SUGGESTIONS

- 1 Glue or tape additional signage onto the top panel, such as a cutout of school logo.
- 2 Attach multiple boxes together to give the bin more height.
- 3 Make it a game! Mount a basketball backboard above it or cut rings into the lid to make it a bulls-eye.

HOW TO: CREATE A BIN MADE WITH BOTTLES



RECYCLE
RALLY

HOW TO: CREATE A BIN MADE WITH BOTTLES

SUPPLIES



plastic bottles



a plastic bag



tape or
superglue



scissors

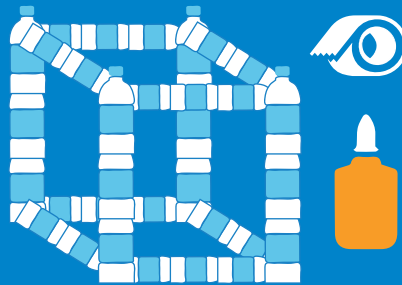
STEP #1

Cut the end off of bottles, insert them inside of one another and glue or tape them in place until they reach the desired height of your bin. Repeat this to form four stacks of bottles.



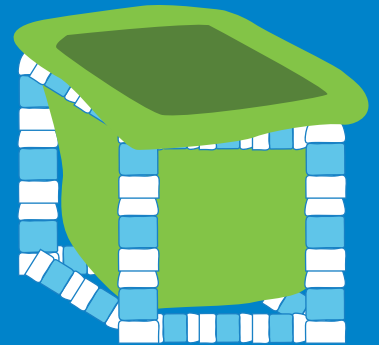
STEP #2

Follow the same procedure to make top and bottom frames. Fasten the corner with superglue or tape to create a cube.



STEP #3

Hang a bag from the top of the frame and start recycling!



TIPS & SUGGESTIONS

- 1 Paint the bottles to add more flair and customization.
- 2 Hang a poster/sign on the front of the bin using zip ties.
- 3 Use PVC pipe from a hardware store to create a sturdier frame.

HOW TO: BUILD A DUAL-CHUTE BIN



RECYCLE
RALLY

HOW TO: BUILD A DUAL-CHUTE BIN

SUPPLIES



3 cardboard boxes
(2 small, 1 large)



scissors



colored papers



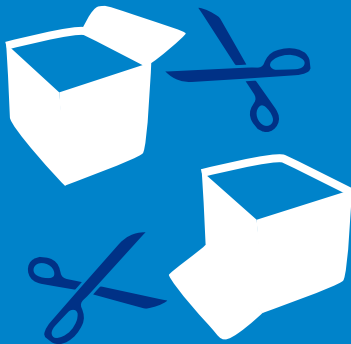
markers



bottles/cans

STEP #1

Cut the bottoms and tops off of the smaller cardboard boxes.



STEP #2

Glue or tape smaller cardboard boxes to the top opening of the larger cardboard box, facing different directions.



STEP #3

Label the chutes to explain what they're intended to accept.



TIPS & SUGGESTIONS

- 1 Glue bottles and cans onto the appropriate sides to cue what goes in it.
- 2 Shape the small boxes like the materials they are designed to accept.
- 3 Include a cardboard divider in the middle of the large cardboard box so that you can separate the materials into two different streams.