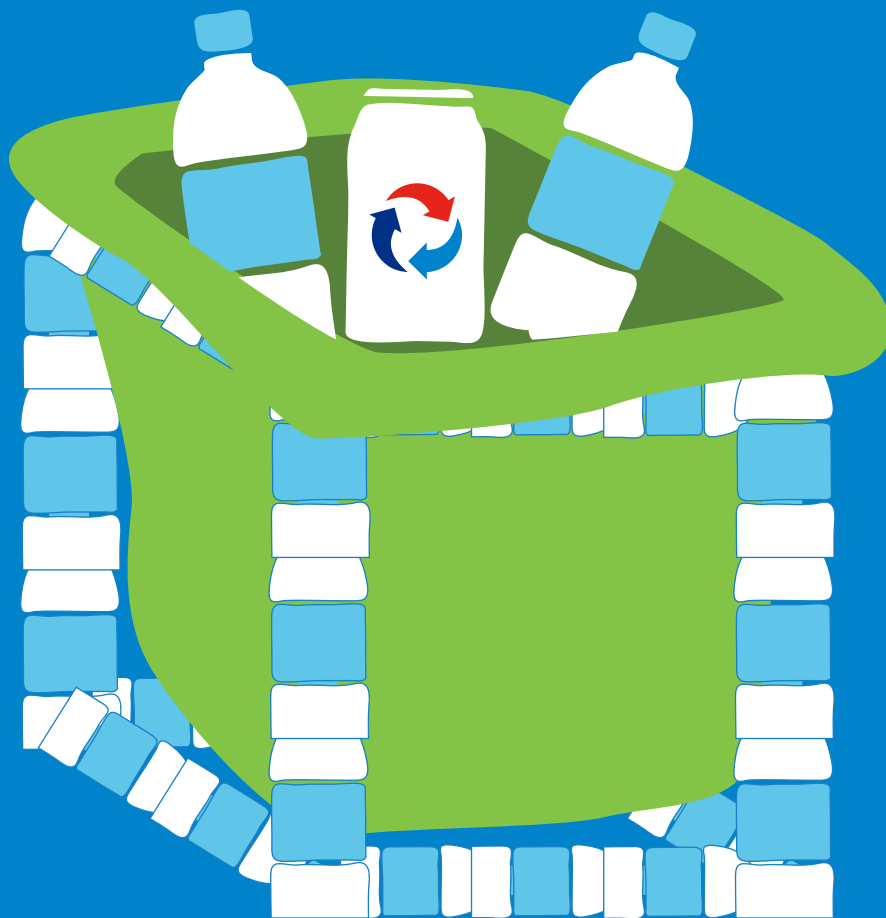


HOW TO: CREATE A BIN MADE WITH BOTTLES



RECYCLE
RALLY

HOW TO: CREATE A BIN MADE WITH BOTTLES

SUPPLIES



plastic bottles



a plastic bag



tape or
superglue



scissors

STEP #1

Cut the end off of bottles, insert them inside of one another and glue or tape them in place until they reach the desired height of your bin. Repeat this to form four stacks of bottles.



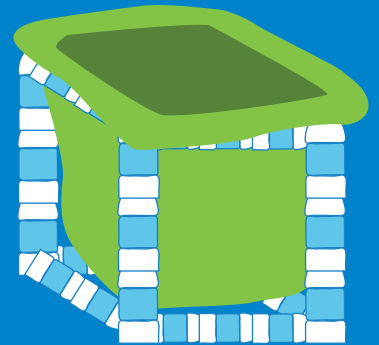
STEP #2

Follow the same procedure to make top and bottom frames. Fasten the corner with superglue or tape to create a cube.



STEP #3

Hang a bag from the top of the frame and start recycling!



TIPS & SUGGESTIONS

- 1 Paint the bottles to add more flair and customization.
- 2 Hang a poster/sign on the front of the bin using zip ties.
- 3 Use PVC pipe from a hardware store to create a sturdier frame.